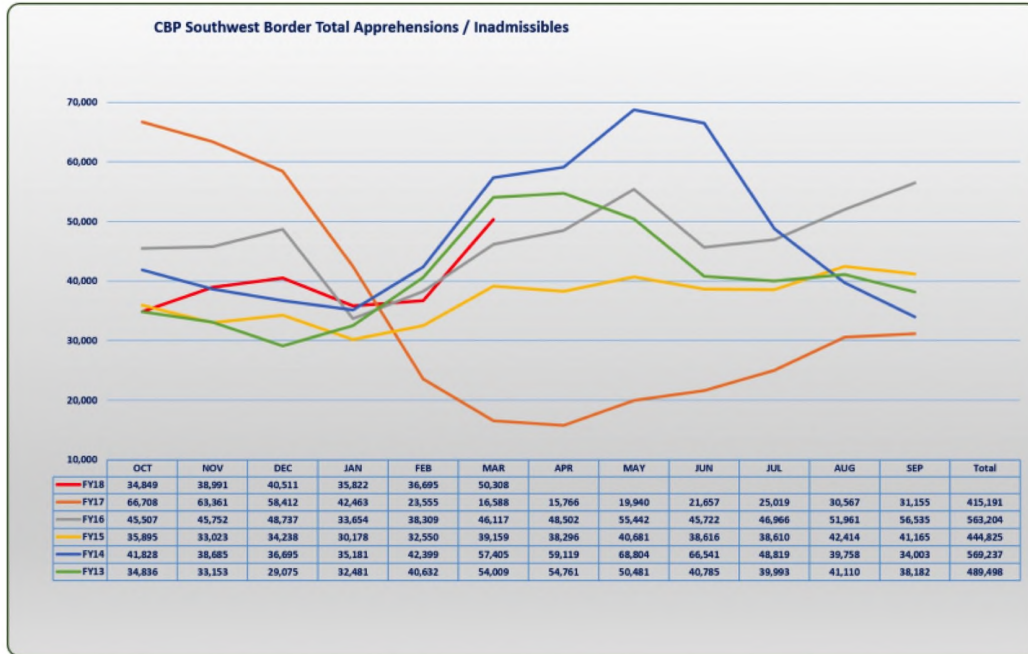


## Southwest Border Migration FY2018

During the month of March CBP saw a 37 percent increase overall when compared to February, but a 203 percent increase compared to March 2017.

The number of Family Units increased by 49 percent and the number of unaccompanied children (UAC) increased by 41 percent compared to last month.



### U.S. Border Patrol Apprehensions FY2018 YTD (October 1 - March 31)

USBP	Demographic	OCT	NOV	DEC	JAN	FEB	MAR	Total
Southwest Border	UAC	3,155	3,977	4,070	3,213	3,134	4,171	21,720
Southwest Border	Family Units	4,837	7,016	8,120	5,654	5,475	8,882	39,984
<b>Southwest Border Total Apprehensions</b>		<b>25,484</b>	<b>29,084</b>	<b>28,998</b>	<b>25,978</b>	<b>26,662</b>	<b>37,393</b>	<b>173,599</b>

Tables are accurate as of 4/2/18, totals change as data is adjudicated.

In March a total of 37,393 individuals were apprehended between ports of entry on our Southwest Border, compared with 26,662 in February and 25,978 in January. In Fiscal Year (FY) 2017, USBP apprehended 303,916 individuals along our Southwest Border, compared to 408,870 in FY16, 331,333 in FY15, and 479,371 in FY14.

For breakdown by Sector, visit [USBP Southwest Border Apprehensions by Sector \(/newsroom/stats/usbp-sw-border-apprehensions\)](/newsroom/stats/usbp-sw-border-apprehensions)

### Office of Field Operations Inadmissibles FY2018 YTD (October 1 - March 31)

Field Operations	Demographic	OCT	NOV	DEC	JAN	FEB	MAR	Total
Southwest Border	UAC	630	672	906	688	610	1,099	4,605
Southwest Border	Family Units	3,230	3,680	4,906	3,562	3,941	5,127	24,446
<b>Southwest Border Total Inadmissibles</b>		<b>9,361</b>	<b>9,909</b>	<b>11,511</b>	<b>9,839</b>	<b>10,021</b>	<b>12,915</b>	<b>63,556</b>

Tables are accurate as of 4/2/18, totals change as data is adjudicated.


In March, 12,915 people presenting themselves at ports of entry on the Southwest Border were deemed inadmissible compared to 10,021 in February, and 9,839 in January. In FY 2017 111,275 individuals were deemed inadmissible compared to 150,825 in FY16, 114,486 in FY15 and 90,601 in FY14.

OFO inadmissibility metrics include: individuals encountered at ports of entry who are seeking lawful admission into the United States but are determined to be inadmissible, individuals presenting themselves to seek humanitarian protection under our laws; and individuals who withdraw an application for admission and return to their countries of origin within a short timeframe.

For breakdown by Field Office, visit **Southwest Border Inadmissibles by Field Office** (</newsroom/stats/fo-sw-border-inadmissibles>)

Last published: April 4, 2018

Tags: **Statistics**, **Unaccompanied Alien Children (UAC)**

 **Share This Page.**